



ASPIRE

BEYOND THE *BUBBLE*

PEOPLE PAVILION 

THINK DIFFERENTLY, LITERALLY!

EMBRACING NEURODIVERSITY IN THE WORKPLACE

Magdalena Weiner

American Express Global Business Travel



Malgorzata Lubelska-Sazanow

University of Silesia



Artur Adamczyk

Psychologist



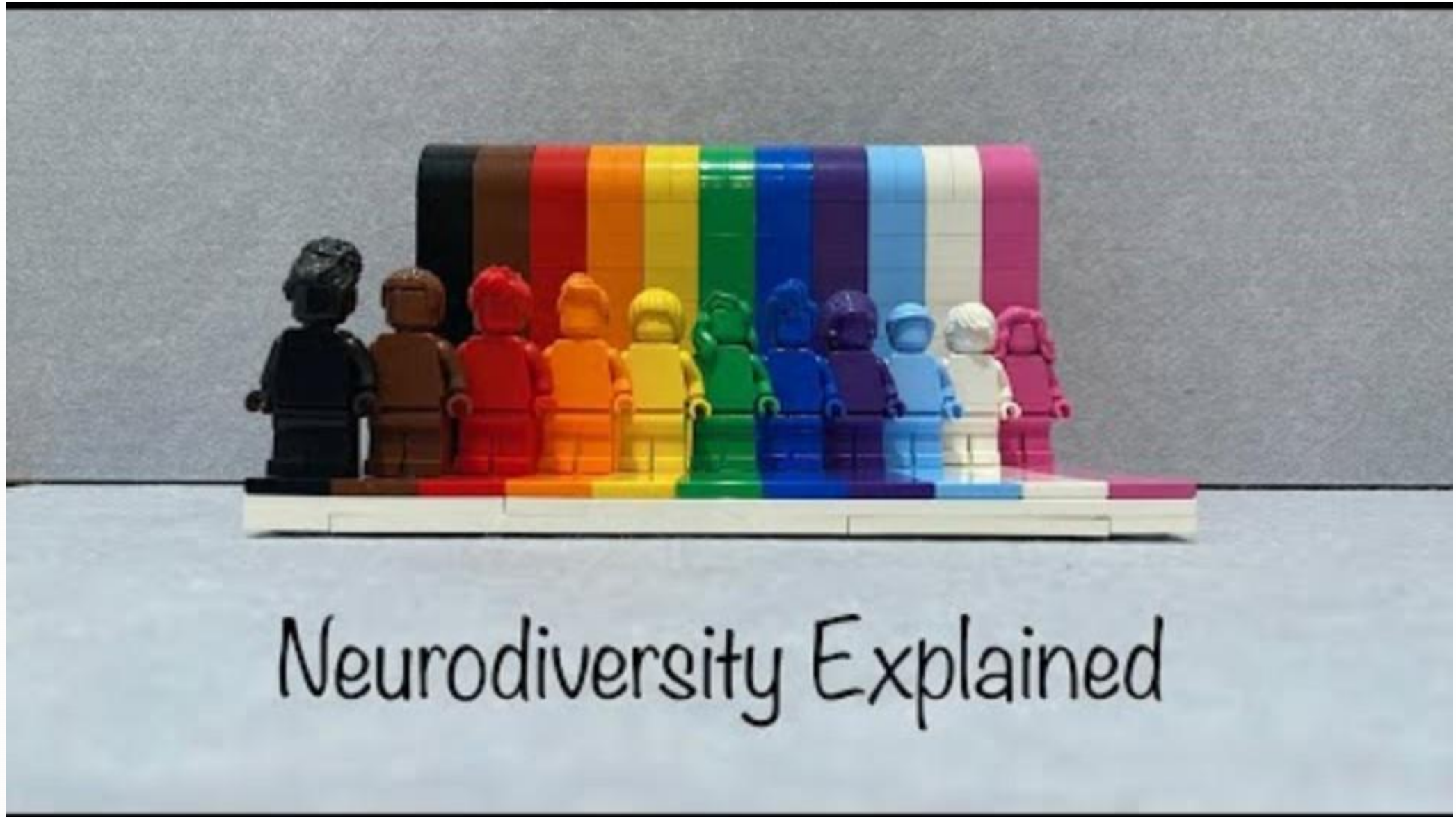
How inclusive are we?

Menti code:
6274 1377



<https://www.menti.com/aln7qzncak7>

What is Neurodiversity?



Reality Check— Statistics

15-20% of the population is neurodivergent.

60% of organizations do not offer any meaningful support to neurodiverse individuals

"**Only 22%** of autistic individuals are in paid employment.,,

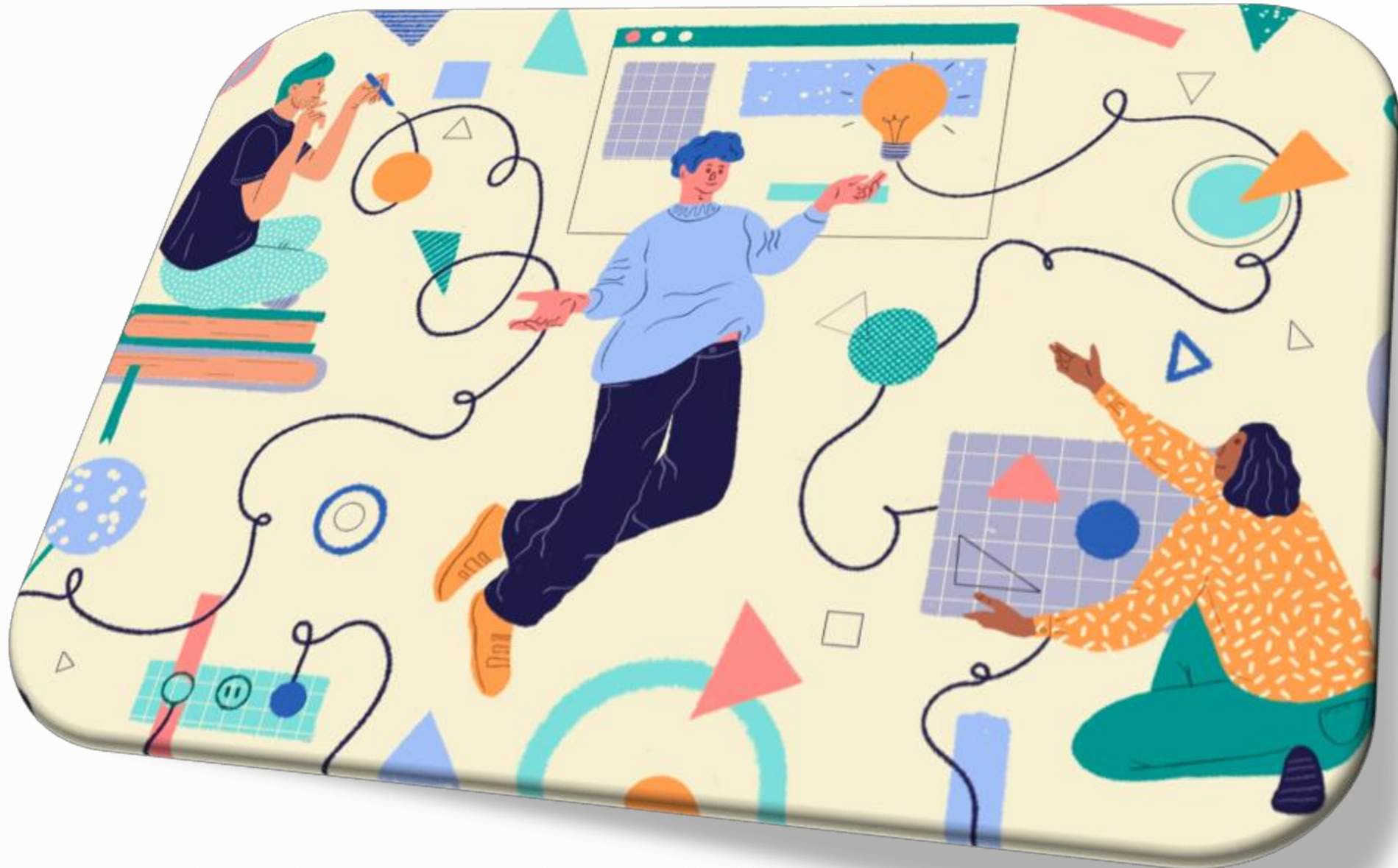
Among neurodivergent employees, **65% fear discrimination** from management, and **55% from colleagues**, if they disclose their condition.

"ADHD **unemployment rates: 2-3 times higher** than neurotypicals.,,

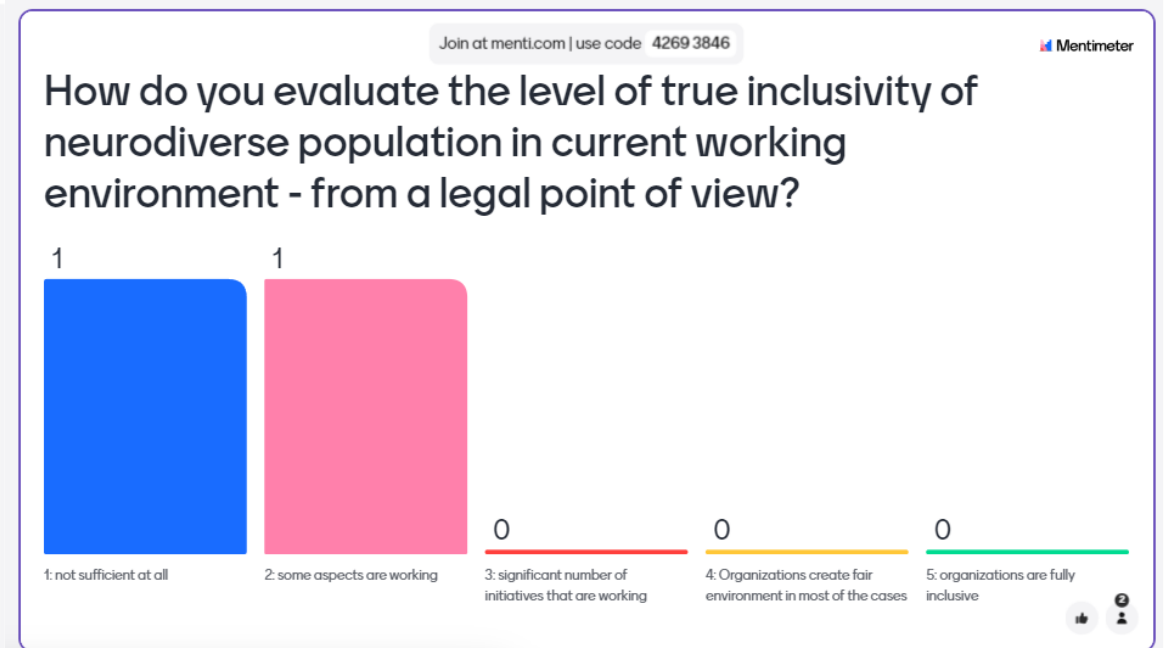
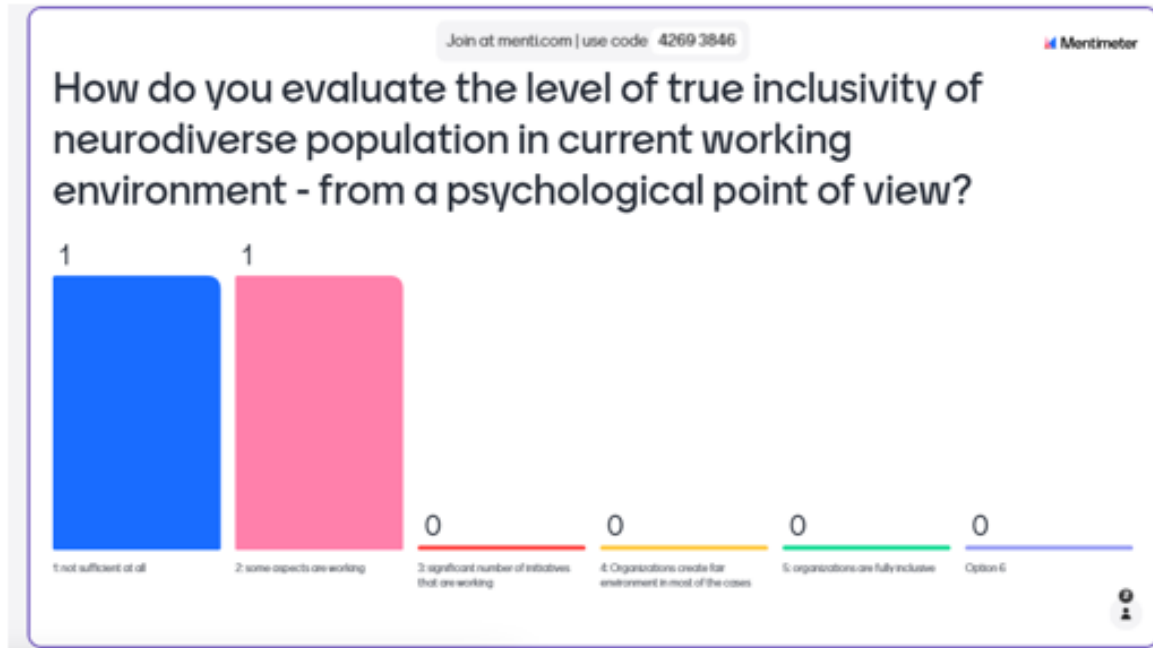
60% of managers are hesitant to hire neurodiverse individuals



How does it really play out?



How inclusive are we today?



Panel discussion

- How effective are inclusion strategies?
- What practical programs work?
- Legal vs. psychological perspectives.





ASPIRE

BEYOND THE *BUBBLE*

THANK YOU
